

# **CSTE 2021–2022 Strategic Impact Plan**

## Direction

### “Inspire”

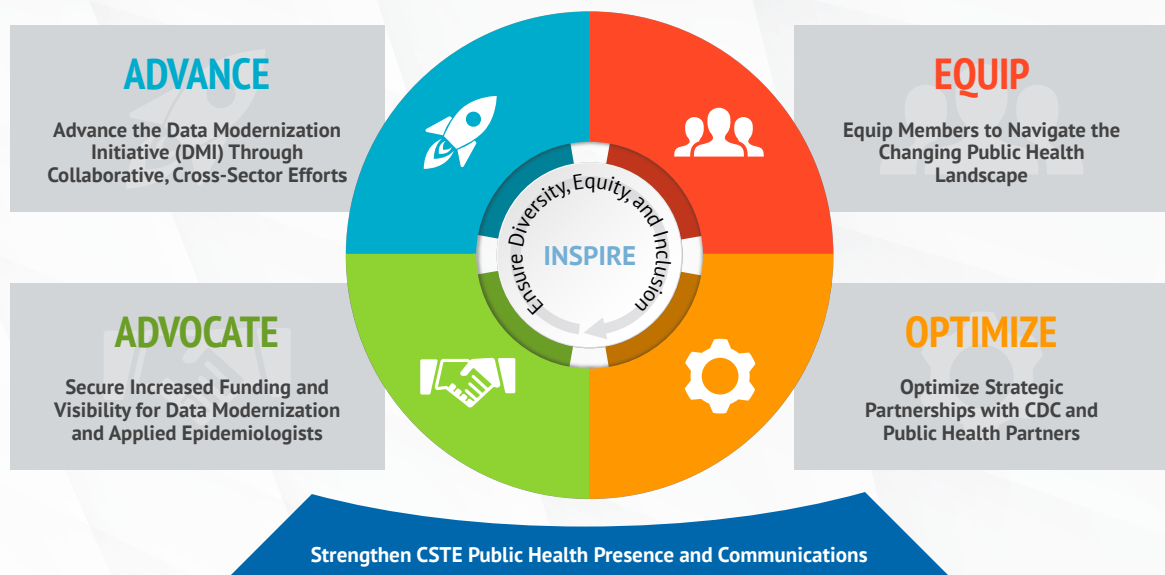
**Vision:** Using the power of epidemiology to improve the public’s health

**Mission:** Promote effective use of epidemiologic data to guide public health practice and improve health  
Support effective public health surveillance and epidemiologic practice through training, capacity development, and peer consultation  
Develop standards for practice  
Advocate for resources and scientifically based policy

**Values:** Commitment to Service, Teamwork, and Excellence Through Integrity and Respect for All

### Central Theme:

*Inspire our Members to Accelerate the Impact of Applied Epidemiology on Public Health and Policy Actions*



## Impact Plan

## Priorities



- Collaborate with partners to develop a Data Modernization Framework incorporating CSTE member priorities
- Increase implementation of electronic case reporting (eCR) nationwide



- Support CSTE Members with resiliency building efforts
- Provide applied epidemiologists with leadership development opportunities
- Equip members to more effectively apply an equity lens to their work



- Increase visibility of Epidemiology on Capitol Hill
- Increase visibility and funding for CDC’s Data Modernization Initiative
- Increase and enhance strategic advocacy communication with members



- Improve engagement with federal public health agencies
- Improve process for pre-decisional engagement and bi-directional crisis communications between CDC and STLT health departments during high consequence public health response events
- Strengthen partnerships with APHL, ASTHO, NACCHO to enhance connectedness amongst epidemiologists, laboratorians, health officials and preparedness staff
- Establish and strengthen public private partnerships to advance public health epidemiology and surveillance priorities